



NEWSLETTER

From St Peter's Church of England (VC) Primary School

No. 507 – 2 December 2016

Diary Dates

Tuesday 6 th December	SEND Parent Forum 8:30am
Tuesday 6 th December	KS1 Hazlitt Theatre Trip (Years R, 1 & 2)
Thursday 8 th December	KS1 Nativity Performance 2pm in The Community Centre
Friday 9 th December	Reception & Year 6 Height & Weight Checks with the School Nurse
Friday 9 th December	KS1 Nativity Performance 6pm in The Community Centre
Tuesday 13 th December	Christmas Lunch
Monday 19 th December	House Competition – Xmas Factor
Tuesday 20 th December	Christingle Service 1:30pm in Church Families Welcome
Wednesday 21 st December	School & Nursery Finishes at 1pm

Last Day of Term

On Wednesday 21st December School and Nursery children can be collected from 1pm. Any monies paid for Nursery/Wrap Around will be credited on next terms invoice. Please let us know in advance if you wish your child to still attend, thank you.

KS1 Nativity

Tickets are on sale from the school office for our Nativity, The Christmas Story. Tickets are £1 each. Families are welcome to the 2pm performance, adults and older children only to the 6pm performance. We would like to say how proud we are of the children for all their effort and thank you to parents for helping children practice their singing and their lines, we are very excited for you all to see the performances next week.

More Able Pupils

The more able pupils at St Peter's are those that have unusually high ability in one or more areas of the curriculum but not necessarily in all. We always aim to identify and then nurture and help improve the talents of the more able children within their own particular area. Children can have a particularly strong ability in various different areas including in their own personal and social development.

Children that have the potential to achieve at a higher level than the majority of their peers will be challenged and encouraged in all areas within academic subjects and will be described as 'more able'.

Whereas any children who have the potential to achieve exceptional performance - representing around 0.5% of the population nationally and capable of PIP scores >70 or CATS scores of 135 - will be described as 'gifted'.

If you feel that your child is more able or talented in an area please email Mrs Craig at headteacher@stpetersaylesford.kent.sch.uk

KS1 Nativity

If your child is being collected by another parent following the Friday performance please ensure teachers are made aware before Friday, thank you.

SEN

The next SENTREE (SEN) parent forum is on Tuesday 6th Dec at 8.30am. As part of the agenda we will share the services of the school nurse, Jacqui Proud. We have also arranged with Jacqui Proud that she will offer a drop in service for parents on Tuesday 17th Jan from 9-12.00 - parents will have to book an appointment but need not do anything else. If you wish to make an appointment please sign up at the office.

They can provide advice, support and signposting for:

- daytime and night time wetting and soiling
- behaviour management
- healthy eating and lifestyle
- emotional health and wellbeing
- complex health needs
- puberty and growing up
- sexual health, including Chlamydia screening
- stopping smoking
- drug and alcohol misuse

Attendance this week

Reception	Class 1	Class 2	Class 3	Class 4	Class 5	Class 6
93.3%	99.2%	93.2%	97.5%	91.5%	92.9%	97.5%

Congratulations to **Class 1** for the highest attendance percentage this week.

NSPCC Dance Off

A huge thank you and well done to the children who raised money for the Sponsored 'Dance Off' we raised a fantastic **£803.54** for the NSPCC.

Congratulations to the following children for being awarded the Presentation Award this week:

- ❖ Emily in Reception Class
- ❖ Charlotte in Class 3
- ❖ Amelia in Class 6
- ❖ Bailey in Class 1
- ❖ Josh in Class 4
- ❖ Lillie in Class 2
- ❖ Jacob in Class 5

Congratulations to the following children for completing their "Good to be Green" card:

- ❖ Evan in Class 1
- ❖ Jared in Class 1
- ❖ Riley in Class 2
- ❖ Kaiden in Class 3
- ❖ Megan in Class 3
- ❖ Poppy in Class 4
- ❖ Ava-Grace in Class 1
- ❖ Ava-Mai in Class 1
- ❖ Arthur in Class 2
- ❖ Barney in Class 3
- ❖ Hannah in Class 4
- ❖ Sophia in Class 4
- ❖ Albie in Class 1
- ❖ Matthew in Class 1
- ❖ Daisy in Class 2
- ❖ Tyler in Class 3
- ❖ Jack in Class 4

Also Congratulations to the following children for receiving awards outside of school:

- ❖ Ruby in Class 3 for being awarded 3rd Place in her Gymnastics Competition
- ❖ Amelie in Class 2 for being awarded Stage 3 Learn to Swim Certificate
- ❖ Lauren in Class 5 for being awarded a Gymnastics Competition

KS2 Children

Please could you let us know if you would prefer your child to come home from school in their school uniform after running, thank you.

Christmas Lunch

Christmas Lunch will be on Tuesday 13th December 2016 and the cost is £2.10 for KS2 children and Free for KS1 children. To ensure the kitchen staff have adequate time to book their supplies please let the office know by Monday 5th December 2016 if your child would like the Christmas Lunch. Payment can be made online or cash at the office.

St Peter's Choir

This week St Peter's Choir attended the AylesARA Group Christmas party at the Royal British Legion Village to sing for the group. The residents all enjoyed their singing and the children represented the school exceptionally well.



Road Crossing Patrol Vacancy Advert November 2016

We are looking for a new team member at our lovely village school as we need a Road Crossing Patrol person to work 5 hours per week term time only (38 weeks per year). Actual times to be worked: Monday – Friday 08:15-08:45 and 14:45-15:15.

The successful applicant will be paid within Kent Scheme Grade KR2, which is £14,277 - £15,101 for a full time appointment, and will be pro rata for part-time hours (equivalent to £7.40 per hour).

St Peter's Primary School is committed to safeguarding and promoting the welfare of our children and expects all staff to share this commitment. All appointments will be subject to safer recruitment procedures. Enhanced DBS checks are required for this post.

For an application pack please visit www.kent-teach.com or contact the School Office on telephone number 01622 717335 or office@stpetersaylesford.kent.sch.uk. Please note the school is closed 22nd December to 2nd January.

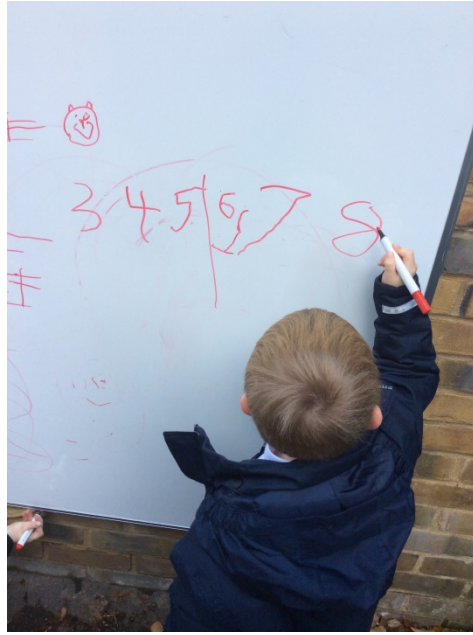
Closing date: 31st December 2016 Selection date: Tuesday 10th January

Class Learning Update:

This Week

Next Week

Mrs Stone
Reception



Mrs Stone will send out a separate update in the children's book bags.

Miss Mathews
Year 1



Year 1 are having a very busy week, we have our trip to the Pantomime and our Nativity performances.

In Maths we will be looking at subtracting.

In English we will be continuing to look at information text.

Spellings: you, your, they, be, he

Mrs Robinson
Year 2



In Maths we will be estimating and comparing mass using g and kg

In English we will be writing instructions

No spellings this week, please practise lines for nativity and songs.

Mrs Christou
Year 3



In Maths we will be solving word problems involving division and multiplication.

In English we will be creating mysterious atmosphere in Ted Hughes' style.

Mr Eastwood
Year 4



In Maths we will be solving word problems and further multiplication & division.

In English we will be writing non-chronological reports.

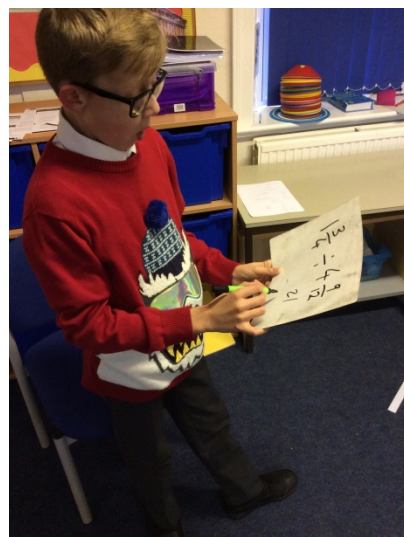
Mrs Shemilt
Year 5



In Maths we will be looking at word problems with multiplication and division.

In English we will be writing explanation texts.

Mr Holt
Year 6



In Maths we will be looking at time problems.

In English we will be finishing our short Agincourt stories.